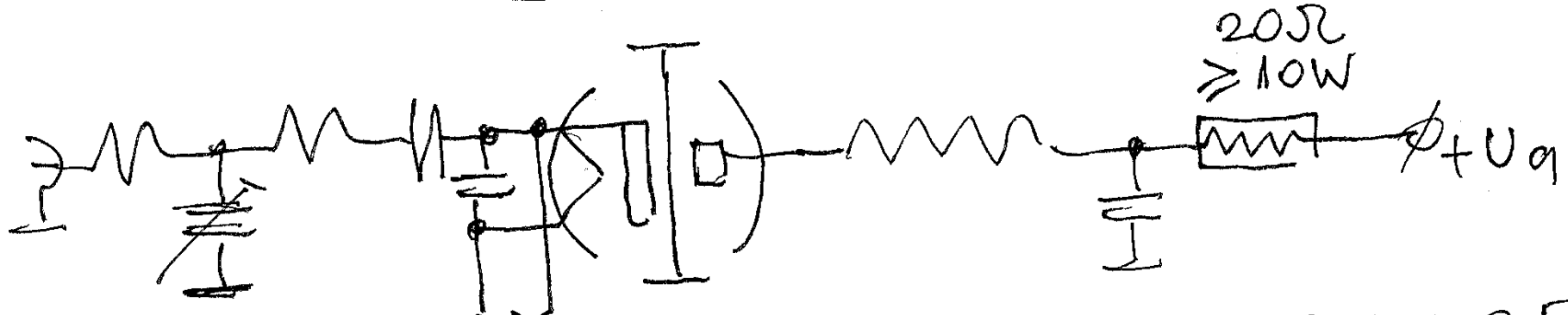


→ 7ASCW

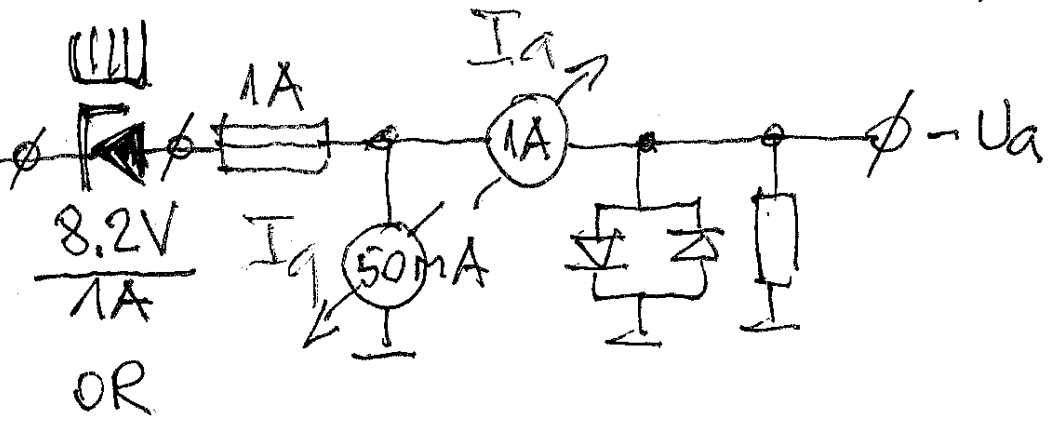
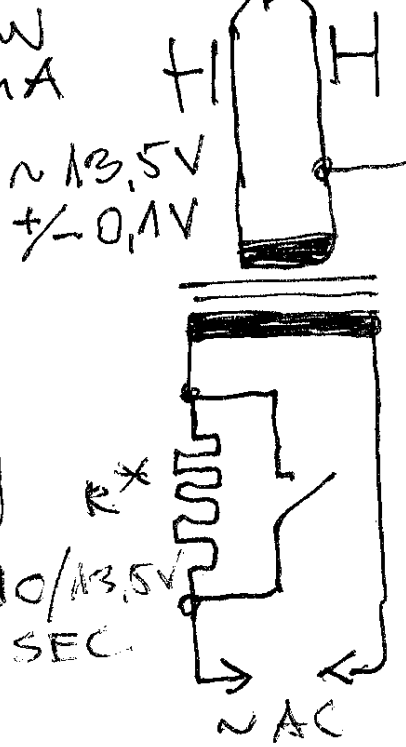
3CX800A7



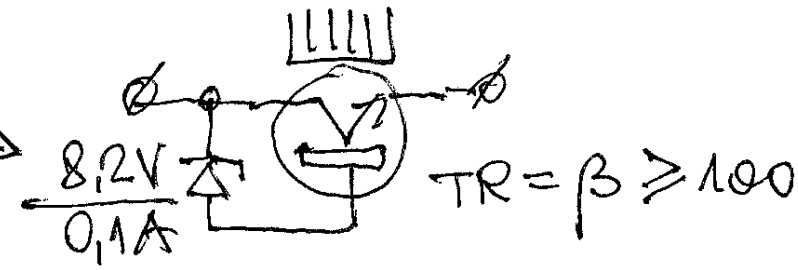
- BIAS + 8,2V
- IDLING $I_0 \approx 15 \dots 16 \text{ mA}$
- MAX DRIVE 15...20W
- MAX $I_g = 35 \dots 40 \text{ mA}$
- MAX $I_a = 0,6 \text{ A}$

2,2 TO 2,5k (MAX)

BY 16W DRIVE
 I_g 36mA, I_a 0,5A
 AND PWR OUTPUT
 CLEAN 750W BY
 2200V U_a



$\frac{8,2\text{V}}{1\text{A}}$
 OR



$TR = \beta \geq 100$

NB! THE IDLING CURRENT IS SO SMALL SO NO NEEDS OF BIAS SWITCHING WHEN RX/TX!