

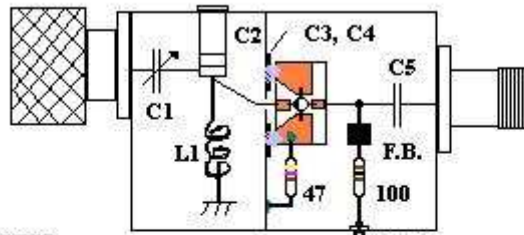
IF YOU A BANNER FOR YOU SITE
YOU CAN INSERT IT HERE 

A simple but excellent 144 and 432 Mhz preamplifier using a FHX35LG

[Uri:Site](#)
I1wqrLinkRadio category preamplifiers
[Category Preamplifiers](#)
[Disclaimer](#)

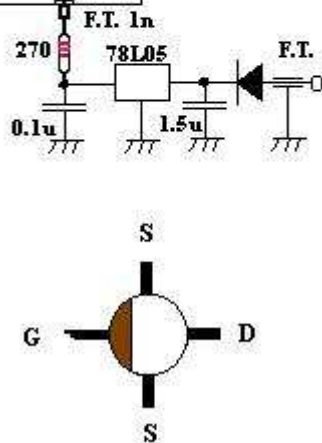
[Take a look to the results of these preamps at the 13th Homemaders Meeting in Orvieto Italy 19-20 september 1998](#)

a 144 - 432 Mhz Preamplifier with the FHX35LG



144 MHZ
C1 = 10 pF trimmer
C2 = 10 pF tube type
C3, C4 = 1 nF chip
C5 = 1 nF ceramic
L1 = 6 turns 1.6/2 mm
CuAg 6 mm dia

432 MHZ
C1 = 4 pF trimmer
C2 = 6 pF tube type
C3, C4 = 1 nF chip
C5 = 1 nF ceramic
L1 = 2-3 turns 1.6/2 mm
CuAg 6 mm dia



The schematic and the suggestion for this good and easy to build preamplifier good for the EME use also come from **Yoshiro, JA4BLC** who does not need any presentation.

He sent me a working prototype which I replicated with the same good result .

Due to the little dimensions a adapter for the fet is recomended even if it is not necessary if you have good eyes and steady hands.

The adapter is made of a little piece of single side copper fiberglass or teflon board, on were are cutted four "islands" were to solder the fet.

I built my prototypes into a commercial 50x50x30 mm box, the position of C2 and L1 is not critical, only the two compartments must be RF sealed, you can solder a finger stock on the divisory wall.

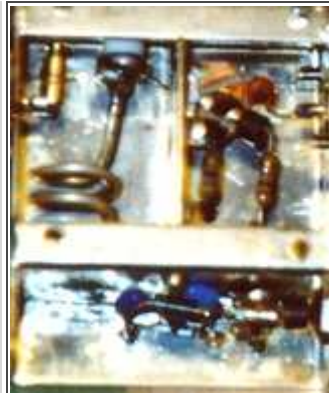
I completely closed the output side with a square of 5mm thick conductive foam used for cmos protection, this solved some self-oscillation problems I found on the 432 Mhz one.

The results should be abt 20 db gain and 0.3 - 0.5 db NF with a drain current abt. 10-15 mA.

More to come soon ... Heat up your Iron !



bird view of the tiny box



enlarged view 432 Mhz preamp