

Component list for the "Main PCB of RF generator"

RESISTORS

=====

100 = R3, R5, R6, R7
330 = R15
3.3k = R4, R11, R12
10k = R1, R2, R8, R9, R10, R13
150k = R14

50k = P1 (any value from 1 to 50k works)
10k = P2 (any value from 1 to 10k works, 10 turns pot is a good choice)

CAPACITORS

=====

1pF = C12
10pF = C16
15pF = C7, C8
47pF = C17, C20
150pF = C21
1nF = C5, C6, C9, C10, C11, C15, C19
100nF = C2, C3, C14
2.2uF = C4, C13, C18
220uF = C1

INDUCTOR

=====

40nH = L1
10uH = L2, L3, L4

Ferrite Bead

=====

BK1608LM182-T = FB1, FB2, FB3, FB4 (10uH inductor works good too)

IC

=====

PIC16F870 = IC1
LMX2322 = IC2

Semiconductor

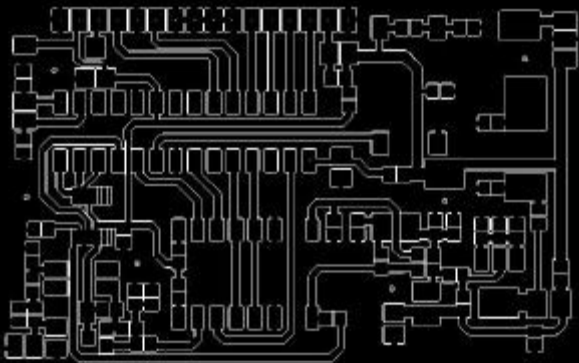
=====

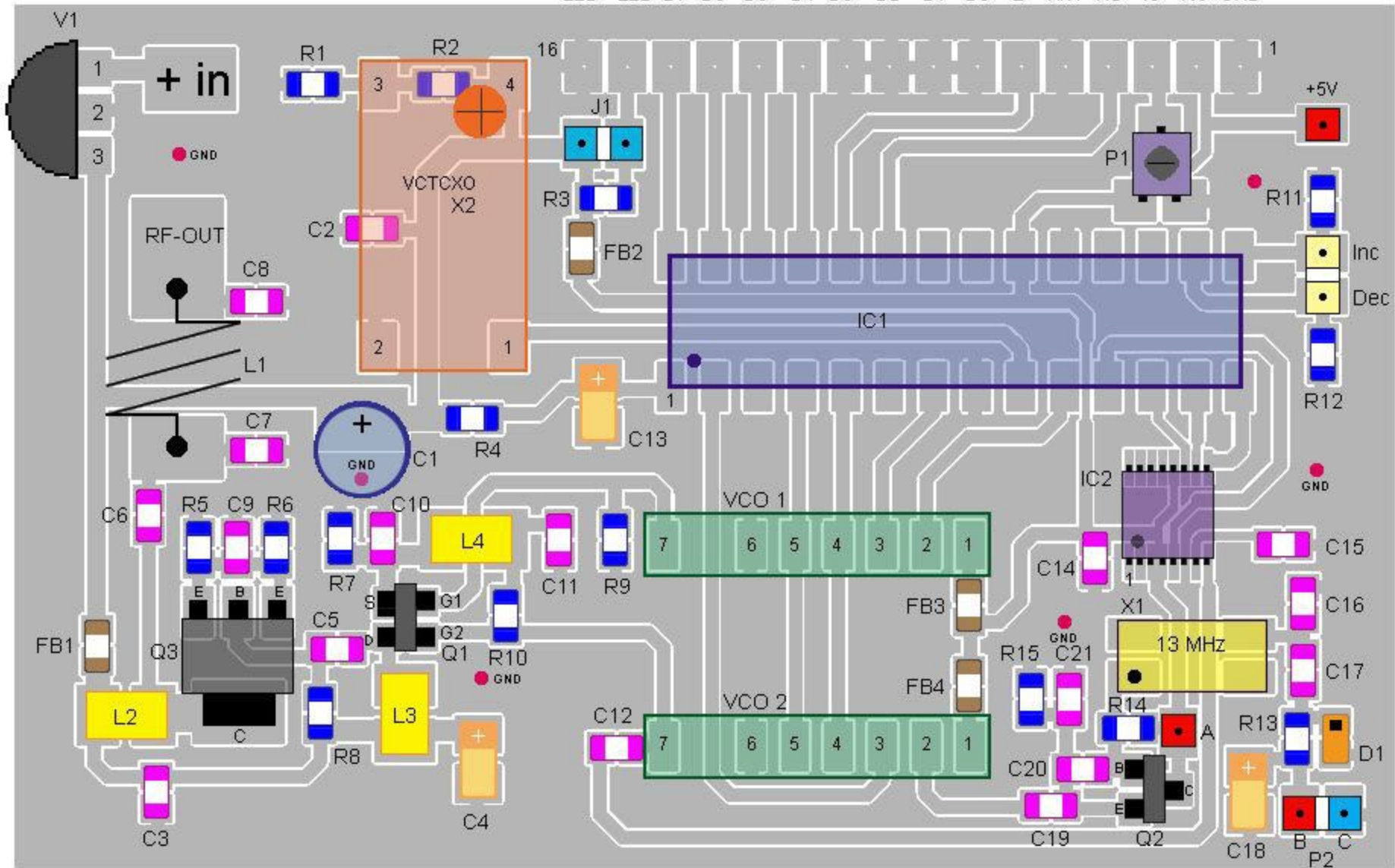
BF998 = Q1
BC817 = Q2
BFG193 = Q3

13MHz = X1
12.8MHz = X2 (NKG3001B is a good choice)

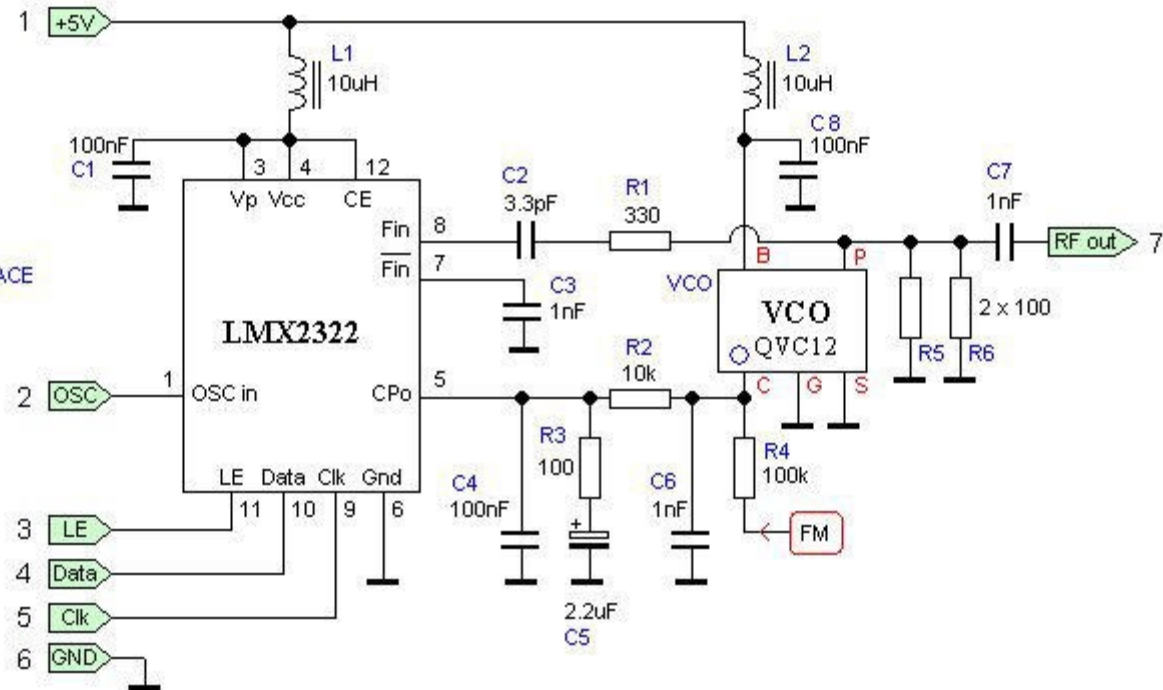
SMV1251 = D1

78L05 = V1





INTERFACE



Component list for the "PLL controlled VCO units"

RESISTORS

=====
100 = R3, R5, R6
330 = R1
10k = R2
100k = R4

CAPACITORS

=====
3.3pF = C2
1nF = C3, C6, C7
100nF = C1, C4, C8
2.2uF = C5

INDUCTOR

=====
10uH = L1, L2 or BK1608LM182-T (FERRITE BEAD)

IC

==
LMX2322
VCO QVC12 (4002MTDK)

