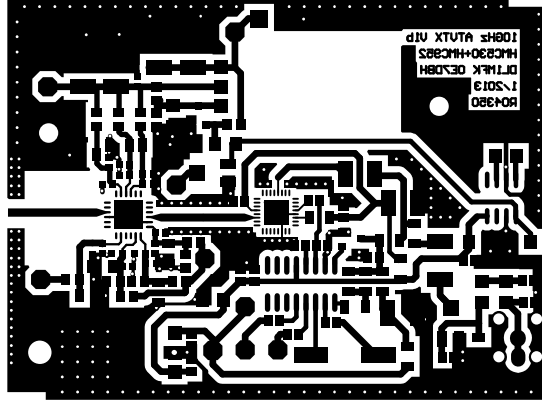
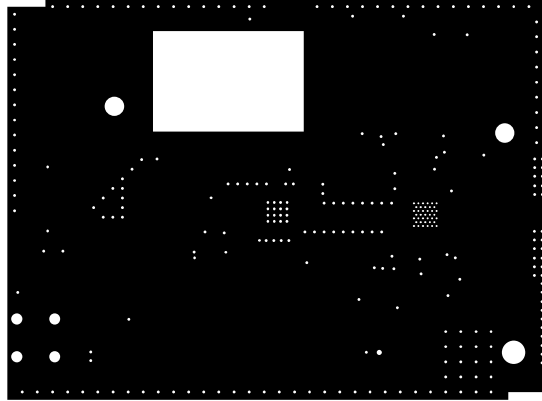


Projekt:
10GHz PLL ATX TX mit 35dBm

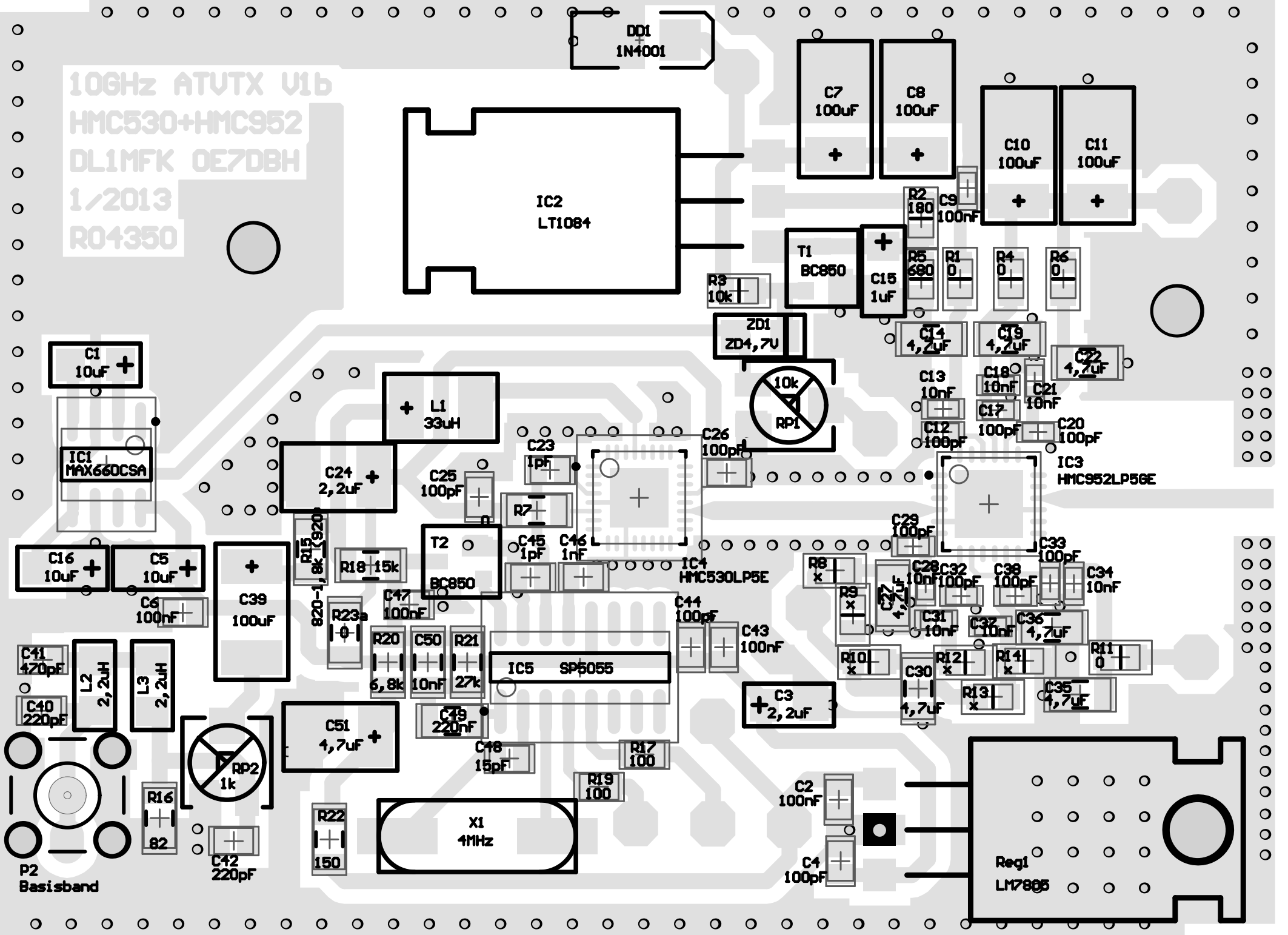
Platinenmaße für Schuster-Gehäuse: 71,35 mm x 53,10; Rogers 4350

Tomtom
DL1MFK
 Datum : 09.01.2013
 Uhrzeit : 15:07:49
 Rev.: B





10GHz ATV TX V1b
HMC530+HMC952
DL1MFK OE7DBH
1/2013
R04350



D01
1N4001

IC2
LT1084

C7
100uF
+

C8
100uF
+

C10
100uF
+

C11
100uF
+

T1
BC850

C15
1uF
+

C1
10uF
+

IC1
MAX660CSA

L1
33uH
+

C24
2,2uF
+

C25
100pF
+

IC4
HMC530LP5E

RP1
10k

C13
10nF
+

C18
10nF
+

C21
10nF
+

IC3
HMC952LP56E

C16
10uF
+

C5
10uF
+

C39
100uF
+

T2
BC850

C45
1pF
+

C46
1nF
+

IC5
SP5055

C44
100pF
+

C43
100nF
+

C29
100pF
+

C28
10nF
+

C32
100pF
+

C38
100pF
+

C33
100pF
+

C34
10nF
+

C41
420pF
+

L2
2,2uH
+

L3
2,2uH
+

R16
82
+

RP2
1k

C51
4,7uF
+

C49
220nF
+

C48
15pF
+

R17
100
+

X1
4MHz

R19
100
+

R22
150
+

C3
2,2uF
+

C2
100nF
+

C4
100pF
+

C27
1,2uF
+

C30
10nF
+

C31
10nF
+

C37
100pF
+

C35
4,7uF
+

C36
10nF
+

C32
10nF
+

C33
100pF
+

C34
10nF
+

C35
4,7uF
+

C36
10nF
+

C37
100pF
+

C38
100pF
+

C39
100uF
+

C40
100pF
+

C41
420pF
+

C42
220pF
+

C43
100nF
+

C44
100pF
+

C45
1pF
+

C46
1nF
+

C47
100nF
+

C48
15pF
+

C49
220nF
+

C50
10nF
+

C51
4,7uF
+

C52
100pF
+

C53
100pF
+

C54
100pF
+

C55
100pF
+

C56
100pF
+

C57
100pF
+

C58
100pF
+

C59
100pF
+

C60
100pF
+

C61
100pF
+

P2
Basisband

Reg1
LM7805