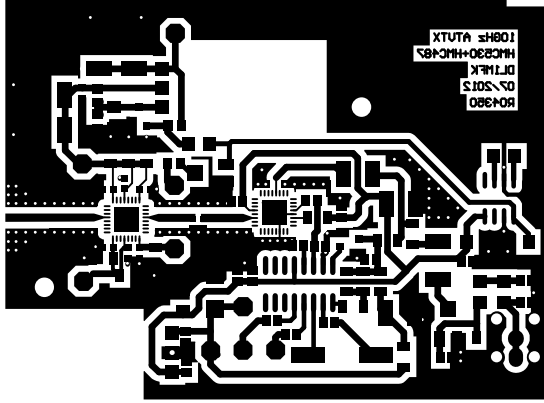
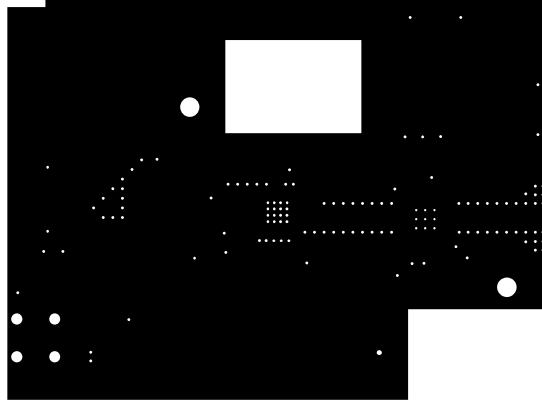


Projekt:  
**10GHz PLL ATX TX mit 33dBm**

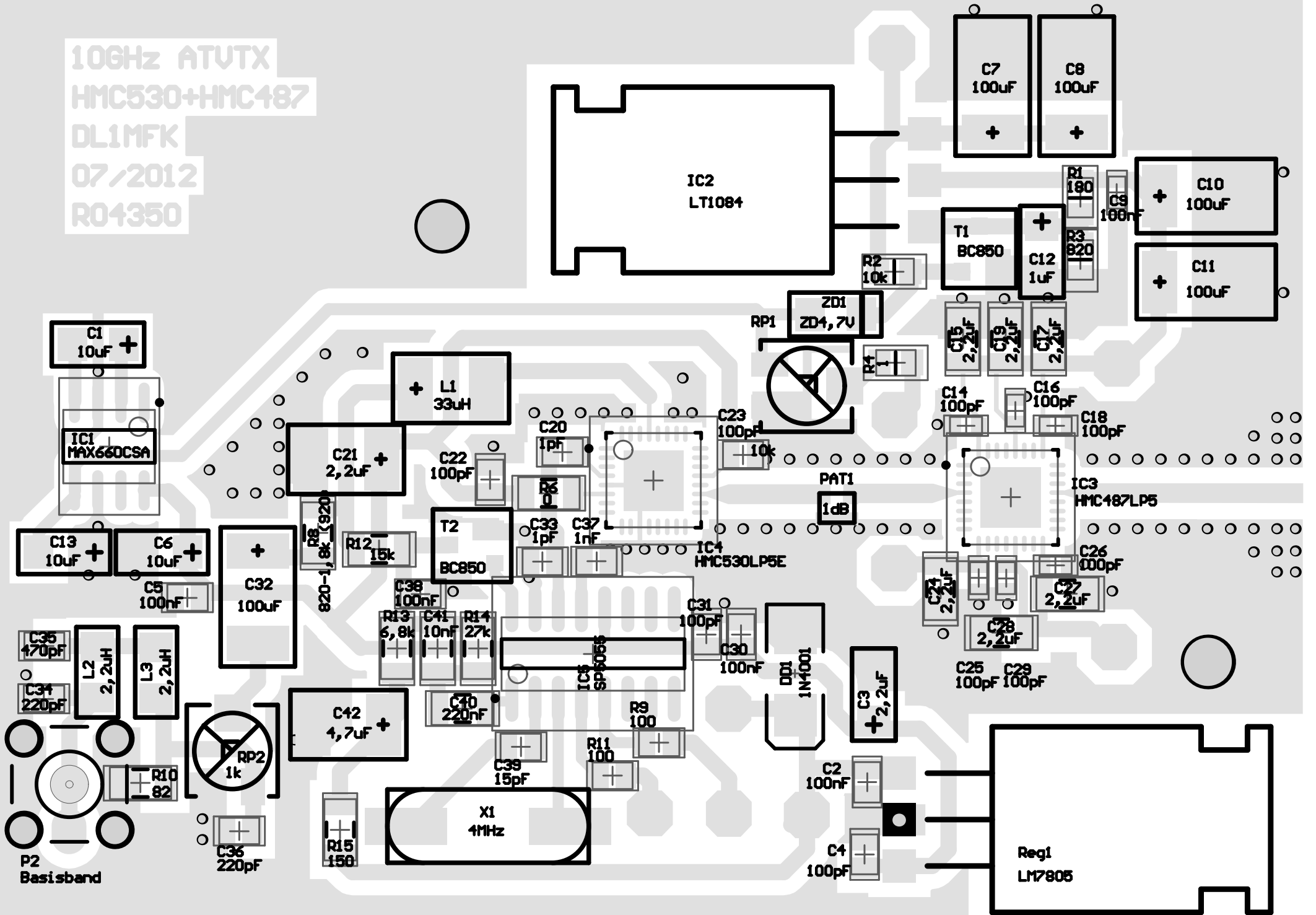
Platinenmaße für Schuster-Gehäuse: 71,35 mm x 53,10; Rogers 4350

Tomtom  
**DL1MFK**  
 Datum : 26.07.2012  
 Uhrzeit : 08:35:36  
 Rev.: A





10GHz ATV TX  
HMC530+HMC487  
DL1MFK  
07/2012  
R04350



IC2  
LT1084

C7  
100uF  
+

C8  
100uF  
+

C10  
100uF  
+

C11  
100uF  
+

T1  
BC850

C12  
1uF  
+

ZD1  
ZD4,7U

RP1

L1  
33uH  
+

C21  
2,2uF  
+

T2  
BC850

IC4  
HMC530LP5E

IC3  
HMC487LP5

C1  
10uF  
+

IC1  
MAX660CSA

C13  
10uF  
+

C6  
10uF  
+

C32  
100uF  
+

C35  
470pF

L2  
2,2uH

L3  
2,2uH

C34  
220pF

C5  
100nF

RP2

R12  
15k

C38  
100nF

R13  
6,8k

C41  
10nF

R14  
27k

C40  
220nF

C39  
15pF

R11  
100

R9  
100

C31  
100pF

C30  
100nF

DD1  
1N4001

C3  
2,2uF  
+

C24  
2,2uF

C27  
2,2uF

C28  
2,2uF

C25  
100pF

C29  
100pF

C26  
100pF

C14  
100pF

C15  
2,2uF

C16  
100pF

C18  
100pF

C17  
2,2uF

C19  
2,2uF

C20  
1pF

C23  
100pF

C22  
100pF

C20  
1pF

C23  
100pF

R2  
10k

R4

C15  
2,2uF

C19  
2,2uF

C17  
2,2uF

C9  
100nF

R1  
180

R3  
820

PAT1  
1dB

P2  
Basisband

RP2  
1k

C36  
220pF

R15  
150

X1  
4MHz

C2  
100nF

C4  
100pF

Reg1  
LM7805